

CLEARWOOD

DIVISION VI
SHEET TWO OF THREE

CERTIFICATE OF SURVEYOR

I, JOHN L. BRACY, HEREBY CERTIFY THAT THIS PLAN OF CLEARWOOD, DIVISION VI, IS BASED UPON AN ACTUAL SURVEY AND SURVEYING OF SECTION 31, T.12 N., R.3 E. W.M. THAT THE DISTANCES AND COURSES SHOWN HEREON ARE CORRECT, THAT THE MONUMENTS HAVE BEEN SET AND LOT CORNERS STAKED ON THE GROUND WITH IRON PIPES.



John L. Bracy 1-5-70
JOHN L. BRACY, REGISTERED
PROFESSIONAL LAND SURVEYOR

UNPLATTED
GOVERNMENT LOT 8
GOVERNMENT LOT 9

DEDICATION

KNOW ALL MEN BY THESE PRESENTS THAT WEYERHAEUSER PROPERTIES INC. A WASHINGTON CORPORATION, OWNED IN FEE SIMPLE OF THE LAND HEREBY PLATTED, HEREBY DEDICATES THIS PLAT, PRIVATE ROADS AS SHOWN HEREON, MUST BE CONSTRUCTED TO THURSTON COUNTY STANDARDS PRIOR TO ACCEPTANCE OF SAID ROADS AS COUNTY ROADS.

THE FOLLOWING RESTRICTIONS AND RESERVATIONS ARE HEREBY IMPOSED UPON THE ENTIRE TRACT OF LAND PLATTED HEREON:
1. ALL LOTS ARE SUBJECT TO THE PROTECTIVE COVENANTS OF NUMBERED CHARGES OF THURSTON COUNTY, WASHINGTON.
2. TRACTS A, I, J, K, L, M, N, O, P, Q, R, S, T, U, V, W, X, Y, Z ARE TO BE USED AS RESIDENTIAL LOTS.
3. MINERAL RIGHTS ARE RESERVED BY PLATTEE AND BY DEED RECORDED UNDER AUDITORS FILE NUMBER 81528.

IN WITNESS WHEREOF WE HAVE SET OUR HANDS AND SEALS THIS 5th DAY OF JANUARY, A. D. 1970.

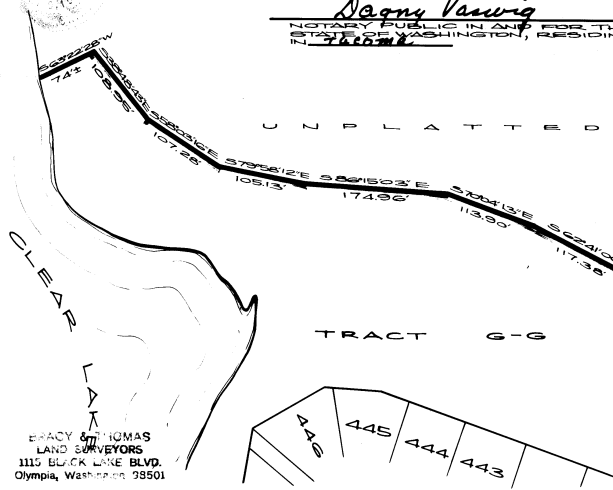
Lon Varnadore
Lon VARNADORE, VICE PRESIDENT
Lynell Reed
Lynell REED, ASSISTANT SECRETARY

ACKNOWLEDGMENT

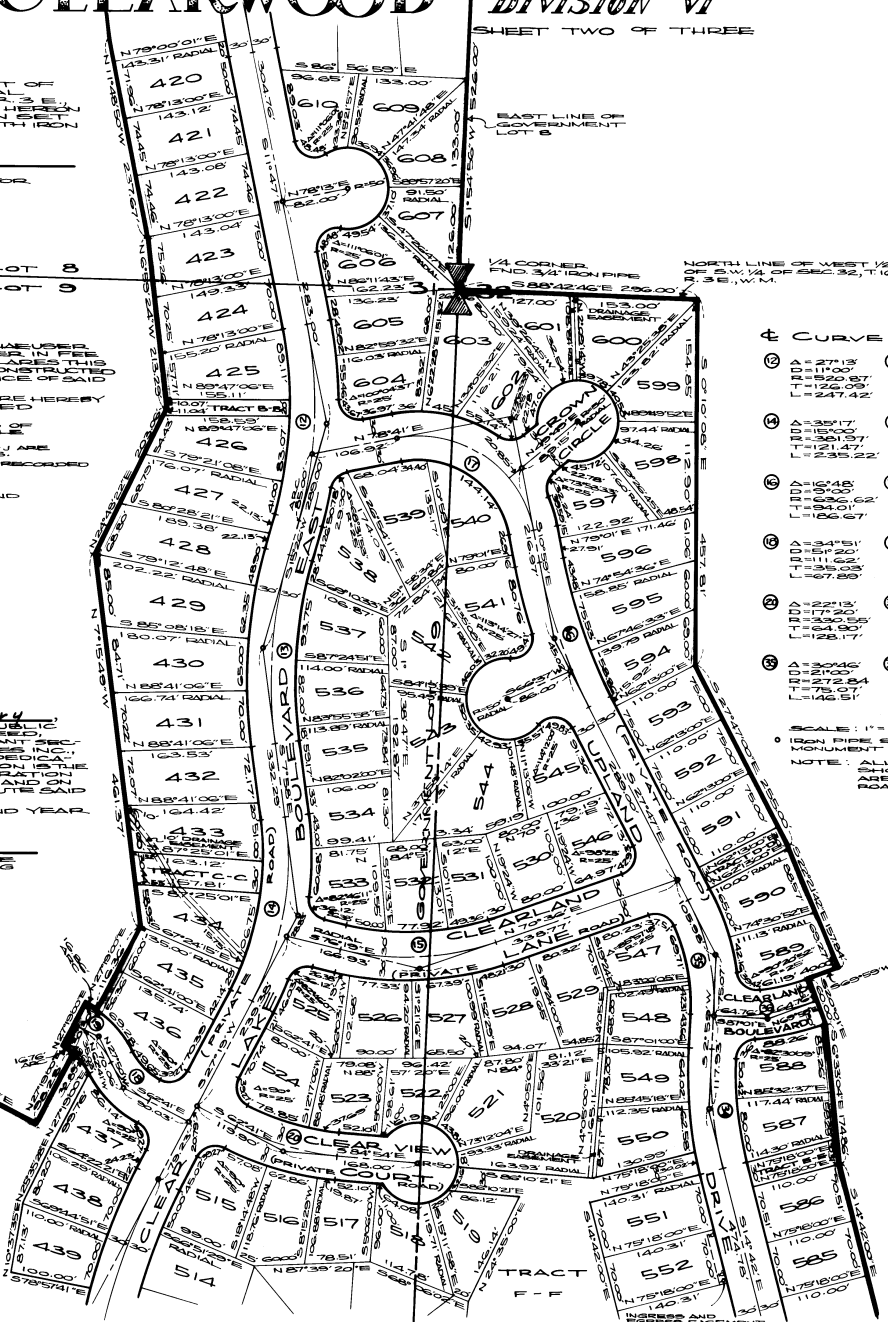
STATE OF WASHINGTON } S.S.
COUNTY OF THURSTON }
THIS IS TO CERTIFY THAT ON THIS 5th DAY OF JANUARY, A. D. 1970, BEFORE ME THE UNDERSIGNED, A NOTARY PUBLIC, PERSONALLY APPEARED LON VARNADORE AND LYNELL REED, BOTH OF THEM BEING OF SOUND MIND AND SOUND MEMORY, BOTH RESIDENTS OF WYERHAEUSER PROPERTIES INC., THE CORPORATION THAT EXECUTED THIS DEDICATION, AND THEY PERSONALLY ACKNOWLEDGED TO ME THAT SAID DEDICATION IS THE FREE AND VOLUNTARY ACT AND DEED OF SAID CORPORATION FOR THE USES AND PURPOSES THEREIN MENTIONED AND SAID PARTIES STATED THAT THEY ARE AUTHORIZED TO EXECUTE SAID DEDICATION.

WITNESS MY HAND AND OFFICIAL SEAL THE DAY AND YEAR FIRST ABOVE WRITTEN.
Dagney Vanvig
NOTARY PUBLIC IN AND FOR THE STATE OF WASHINGTON, RESIDING IN THURSTON

VOL. 16 PG. 75
AF 815733



BRACY & THOMAS
LAND SURVEYORS
1115 BLACK LAKE BLVD.
Olympia, Washington 98501



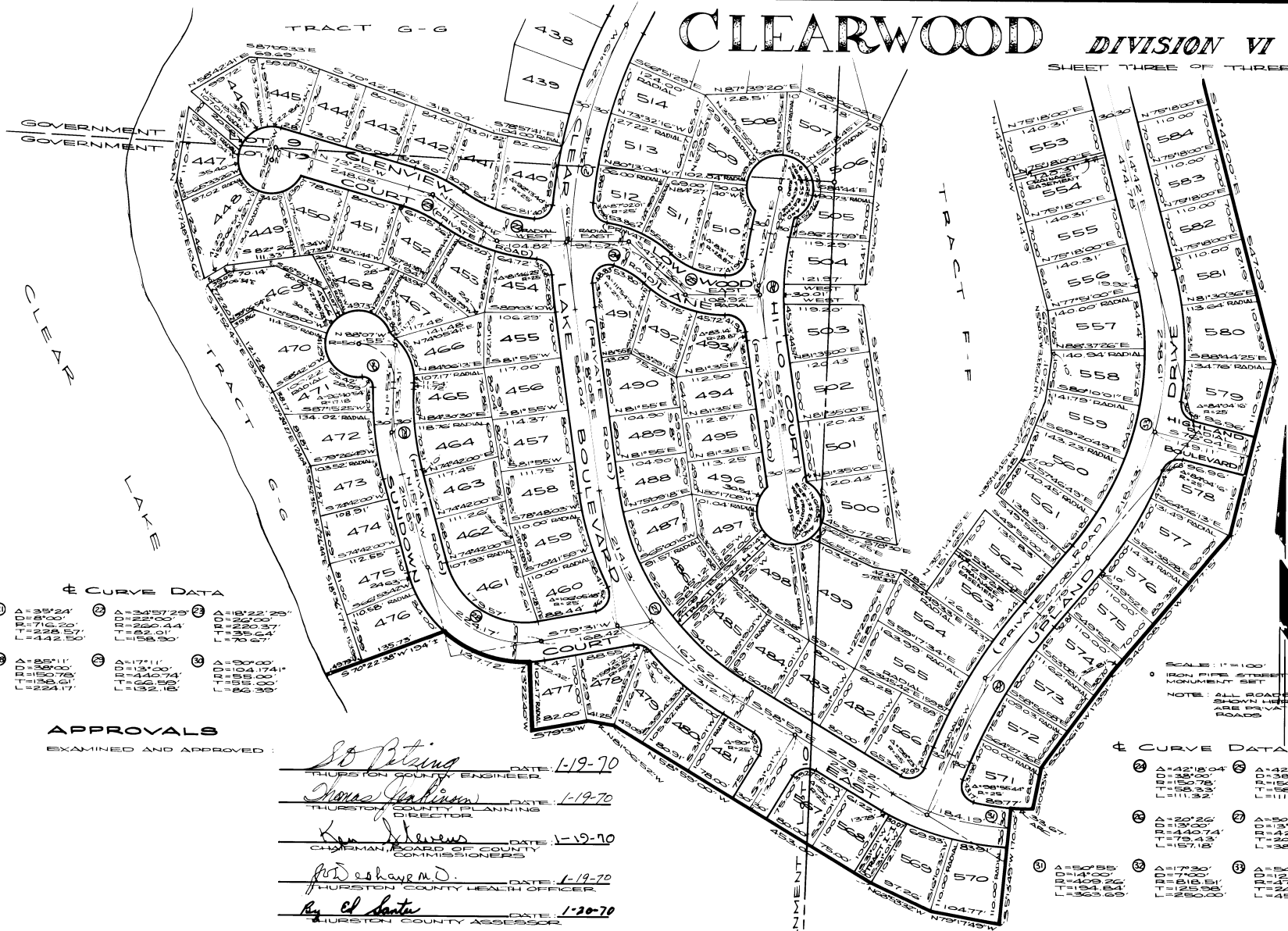
CURVE DATA

1) Δ = 27°13' R = 520.67 T = 126.09 L = 247.42	2) Δ = 23°24' R = 1000 T = 186.65 L = 234.00	3) Δ = 33°05' R = 1700 T = 337.03 L = 194.61	4) Δ = 35°17' R = 351.37 T = 121.47 L = 235.22	5) Δ = 33°05' R = 1700 T = 337.03 L = 194.61	6) Δ = 10°48' R = 1000 T = 66.62 L = 186.67	7) Δ = 30°20' R = 400.00 T = 144.00 L = 225.00	8) Δ = 34°51' R = 511.62 T = 35.03 L = 67.83	9) Δ = 34°51' R = 511.62 T = 35.03 L = 67.83	10) Δ = 22°13' R = 330.55 T = 64.30 L = 128.17	11) Δ = 17°41' R = 322 T = 47.46 L = 147.36	12) Δ = 30°46' R = 272.54 T = 78.07 L = 146.51	13) Δ = 23°00' R = 518.31 T = 64.75 L = 127.78
---------------------------------------------------------	-------------------------------------------------------	-------------------------------------------------------	---------------------------------------------------------	-------------------------------------------------------	------------------------------------------------------	---------------------------------------------------------	-------------------------------------------------------	-------------------------------------------------------	---------------------------------------------------------	------------------------------------------------------	---------------------------------------------------------	---------------------------------------------------------

SCALE: 1"=100'
IRON PIPE STREET MONUMENT SET
NOTE: ALL ROADS SHOWN ARE PRIVATE ROADS

CLEARWOOD DIVISION VI

SHEET THREE OF THREE



Curve Data

① Δ = 35°24'	② Δ = 34°57'29"	③ Δ = 18°22'29"
D = 81'00'	D = 27'00"	D = 20'00"
L = 228'57'	L = 226'44'	L = 230'37'
	L = 158'30"	L = 65'44'
		L = 70'00"
④ Δ = 55°11'	⑤ Δ = 17°11'	⑥ Δ = 0°00'
D = 39'00'	D = 13'00"	D = 104'174.1'
L = 150'76.5'	L = 44'07.4'	L = 83'00"
L = 234'17'	L = 152'18"	L = 60'30"

Curve Data

⑦ Δ = 42°18'04"	⑧ Δ = 42°18'04"
D = 38'00'	D = 38'00"
L = 150'76.5'	L = 150'76.5'
L = 111'32"	L = 111'32"
⑨ Δ = 20°26'	⑩ Δ = 50°54'
D = 19'00"	D = 12'00"
L = 44'07.4'	L = 425'72'
L = 157'18"	L = 224'51'
	L = 381'75'
⑪ Δ = 50°55'	⑫ Δ = 7°00'
D = 14'00"	D = 7'00"
L = 154'64'	L = 515'51'
L = 363'69"	L = 250'00"
⑬ Δ = 54°50'	⑭ Δ = 12'00"
D = 12'00"	D = 12'00"
L = 247'26'	L = 247'26'
L = 456'54'	L = 456'54'

APPROVALS

EXAMINED AND APPROVED:

Ed Peters DATE: 1-19-70
 THURSTON COUNTY ENGINEER

James Yarbrough DATE: 1-19-70
 THURSTON COUNTY PLANNING DIRECTOR

Sam Stevens DATE: 1-19-70
 CHAIRMAN, BOARD OF COUNTY COMMISSIONERS

John Dehaven M.D. DATE: 1-19-70
 THURSTON COUNTY HEALTH OFFICER

By El Santa DATE: 1-20-70
 THURSTON COUNTY ASSESSOR

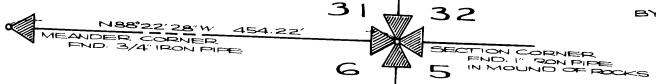
I CERTIFY THAT THE TAXES ON THE PROPERTY SHOWN HEREON HAVE BEEN PAID, SIGNED AND APPROVED THIS 19 DAY OF JANUARY, A.D. 1970.

John W. Gracy
 THURSTON COUNTY ENGINEER



FILED FOR RECORD AT THE REQUEST OF *Frank Thomas* ON THIS 20 DAY OF JANUARY, 1970, AT 10:30 A.M. AND DEPOSITED IN THE OFFICE OF THE CLERK OF COURTS AND COUNTY RECORDS OF THURSTON COUNTY, WASHINGTON.

C. H. Leach
 THURSTON COUNTY AUDITOR
 BY: *Bernice Seibold*
 DEPUTY



Vol. 16 Pg. 76
 AF # 815733