

CLEARWOOD DIVISION VIII

DESCRIPTION

THAT PART OF GOVERNMENT LOT 10, SECTION 31 AND OF THE SOUTHWEST QUARTER OF SECTION 32, TOWNSHIP 15 NORTH, RANGE 3 EAST, WILLAMETTE MERIDIAN, AND TO THE EAST OF SECTION 31 AND OF THE NORTHEAST QUARTER OF SECTION 32, TOWNSHIP 15 NORTH, RANGE 3 EAST, WILLAMETTE MERIDIAN, LYING SOUTHERLY OF THE PLAT OF CLEARWOOD, DIVISION VII, AS RECORDED IN VOLUME 16 OF PLATS AT PAGES 71, 73 AND 74, RECORDS OF THIS COUNTY, WASHINGTON, WESTERLY AND SOUTHERLY OF THE PLAT OF CLEARWOOD, DIVISION VIII, AS RECORDED IN VOLUME 17 OF PLATS AT PAGES 63 AND 61, RECORDS OF SAID COUNTY, AND LYING WESTERLY, NORTHERLY AND EASTERLY OF SAID PLAT OF CLEARWOOD, DIVISION VIII, SAID CORNER IS ON THE WESTERLY RIGHT-OF-WAY LINE OF THE (1) HALF-HALF-CENTURY TELEPHONE ROAD; THENCE ALONG SAID WESTERLY RIGHT-OF-WAY LINE S 84.53° W 26.03 FEET; ALONG A CURVE TO THE LEFT HAVING A RADIUS OF 366.72 FEET A DISTANCE OF 472.16 FEET; S 14° 22' W 356.11 FEET; ALONG A CURVE TO THE RIGHT HAVING A RADIUS OF 226.62 FEET A DISTANCE OF 454.02 FEET; AND S 48° 07' W 284.65 FEET; THENCE N 43° 52' W 87.93 FEET TO A POINT ON A CURVE; THE RADIUS POINT SAID CURVE 302.27 FEET; S 43° 08' W 110.00 FEET; THENCE NORTHERLY ALONG N 70° 55' W 83.65 FEET; S 54° 32' E 150.78 FEET; N 43° 52' W 103.00 FEET; N 07° 40' E 214.97 FEET; S 85° 14' 32" E 97.27 FEET; N 15° 32' W 108.00 FEET; MORE OR LESS TO THE NORTHERLY LINE OF SAID GOVERNMENT LOT 10 OF SAID SECTION 31; THENCE EASTERLY AND NORTHERLY ALONG SAID NORTHERLY LINE AND ALONG THE WESTERLY LINE OF SAID GOVERNMENT LOT 10 OF SECTION 31 TO THE SOUTHERLY LINE OF SAID PLAT OF CLEARWOOD, DIVISION VII.

☞ CURVE DATA

①	②	③
R 1100	R 1100	R 1100
85° 05'	12° 10'	81° 22'
119.38	22.33	115.30
119.38	23.40	115.30
58.26	4.77	58.41
		36.73

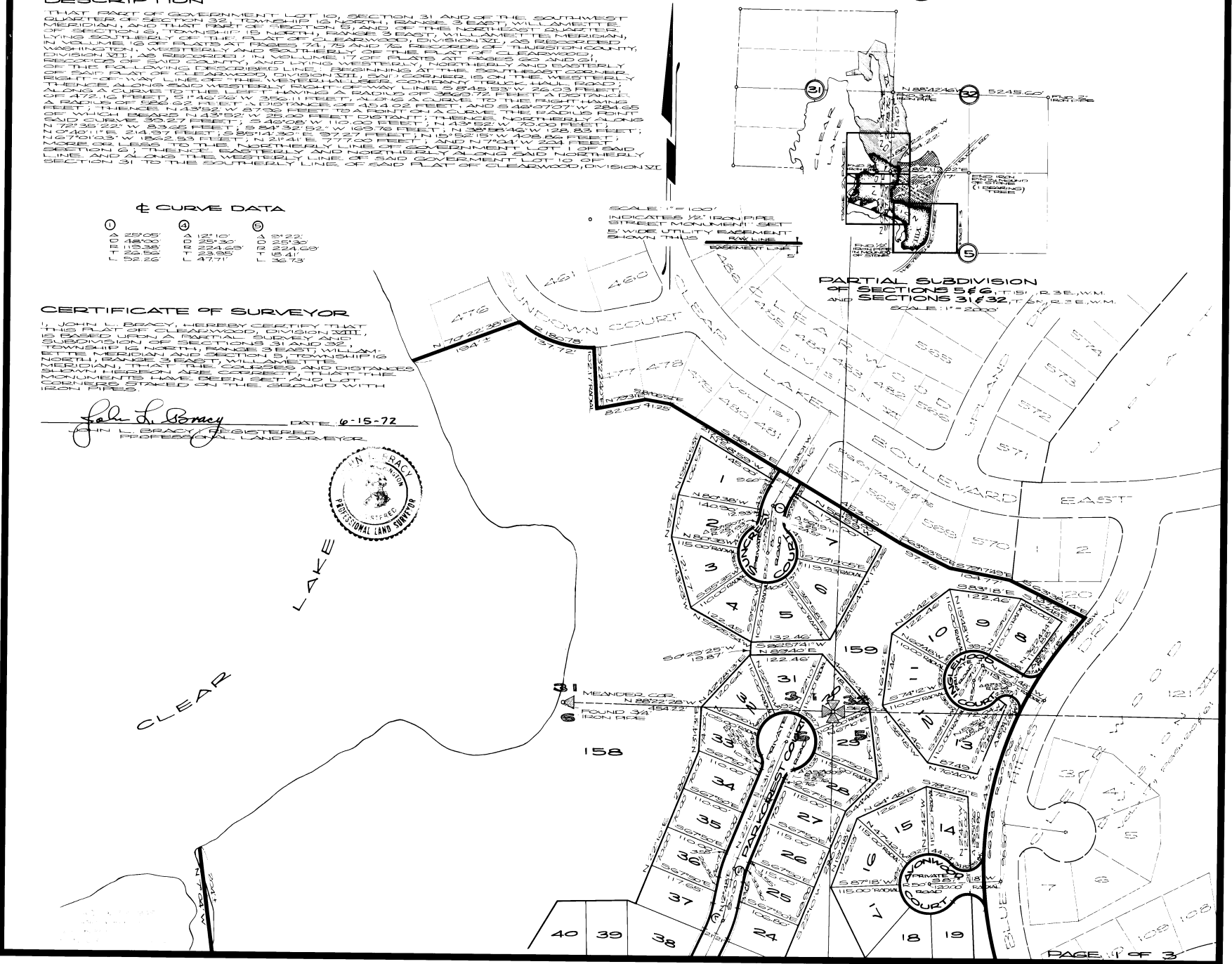
SCALE 1" = 100'
 INDICATED 12" IRON PIPE
 STREET MONUMENT SET
 5" WIDE UTILITY EQUIPMENT
 SHOWN THIS
 CENTER LINE

PARTIAL SUBDIVISION
 OF SECTIONS 5 & 6, T15N, R3E, W4M,
 AND SECTIONS 31 & 32, T15N, R3E, W4M.
 SCALE 1" = 2000'

CERTIFICATE OF SURVEYOR

I, JOHN L. BEACRY, HEREBY CERTIFY THAT THIS PLAT OF CLEARWOOD, DIVISION VIII, IS BASED UPON A PARTIAL SUBDIVISION OF SECTIONS 31 AND 32, TOWNSHIP 15 NORTH, RANGE 3 EAST, WILLAMETTE MERIDIAN, AND SECTION 5, TOWNSHIP 15 NORTH, RANGE 3 EAST, WILLAMETTE MERIDIAN; THAT THE COURSES AND DISTANCES SHOWN HEREON ARE CORRECT; THAT THE MONUMENTS HAVE BEEN SET AND LOT CORNERS STAKED ON THE GROUND WITH IRON PIPES.

John L. Beacry DATE 6-15-72
 JOHN BEACRY REGISTERED PROFESSIONAL LAND SURVEYOR



VOL. 17 PG. 95
 AF # 870538

CLEARWOOD DIVISION VIII



DEDICATION

KNOW ALL MEN BY THESE PRESENTS THAT QUADRANT CORPORATION, A WASHINGTON CORPORATION, OWNED IN FEE SIMPLE OF THE LAND HEREBY PLATED HEREBY DECLARED THE FIRST PRIVATE BOUND AS SHOWN HEREON MUST BE CONSTRUCTED TO THURSTON COUNTY STANDARDS PRIOR TO ACCEPTANCE OF SAID ROADS AS COUNTY ROADS.

THE FOLLOWING RESTRICTIONS AND RESERVATIONS ARE HEREBY IMPOSED UPON THE ENTIRE TRACT OF LAND PLATED HEREON:

1. ALL LOTS ARE SUBJECT TO THE PROTECTIVE COVENANTS OF CLEARWOOD DIVISION VIII AS RECORDED UNDER AUDITOR'S FILE NUMBER 870538 RECORDS OF THURSTON COUNTY, WASHINGTON.
2. TRACTS 152 THROUGH 159 ARE RESERVED FOR COMMUNITY PARK AND RECREATION FACILITIES.
3. MINERAL RIGHTS ARE RESERVED BY PLATTEE AND BY CEED HEREON UNLESS AUDITOR'S FILE NUMBER 870538 RECORDS OF THURSTON COUNTY, WASHINGTON.

IN WITNESS WHEREOF I HAVE SET MY HAND THIS 6th DAY OF JULY, A.D. 1972

Dick Willard
DICK WILLARD, PRESIDENT

ACKNOWLEDGMENT

STATE OF WASHINGTON } S.S.
COUNTY OF KING }

THIS IS TO CERTIFY THAT ON THIS 6th DAY OF July, A.D. 1972, BEFORE ME THE UNDERSIGNED, A NOTARY PUBLIC, PERSONALLY APPEARED _____ TO ME, KNOWN TO BE THE PRESIDENT OF QUADRANT CORPORATION, THE CORPORATION THAT EXECUTED THE FOREGOING DEDICATION AND ACKNOWLEDGED TO ME THAT HE SIGNED THE SAME AS THE FREE AND VOLUNTARY ACT AND DEED OF SAID CORPORATION FOR THE USES AND PURPOSES THEREIN MENTIONED AND ON OATH STATED THAT HE WAS AUTHORIZED TO EXECUTE SAID DEDICATION.

WITNESS MY HAND AND OFFICIAL SEAL THE DAY AND YEAR FIRST ABOVE WRITTEN

Virginia Kay Woods
NOTARY PUBLIC IN AND FOR THE STATE OF WASHINGTON RESIDING IN Everett

CURVE DATA

Curve	Delta	D	L	Delta	D	L	Delta	D	L
1	42°04'	28'40"	146'74"	2	12°04'	39'15"	3	52°15'	60'36"
4	199°57'	75'86"	146'74"	5	39'15"	42'56"	6	199°57'	30'15"
7	146°74'	146'74"	146'74"	8	84'96"	203'20"	9	111°33'	176'94"
10	29°53'	350'79"	174'84"	11	66°22'	150'70"	12	47°12'	73°28'
13	350'79"	174'84"	174'84"	14	150'70"	150'70"	15	150'70"	125'20"
16	174'84"	174'84"	174'84"	17	150'70"	150'70"	18	150'70"	150'70"
19	174'84"	174'84"	174'84"	20	150'70"	150'70"	21	150'70"	150'70"
22	174'84"	174'84"	174'84"	23	150'70"	150'70"	24	150'70"	150'70"
25	174'84"	174'84"	174'84"	26	150'70"	150'70"	27	150'70"	150'70"
28	174'84"	174'84"	174'84"	29	150'70"	150'70"	30	150'70"	150'70"
31	174'84"	174'84"	174'84"	32	150'70"	150'70"	33	150'70"	150'70"
34	174'84"	174'84"	174'84"	35	150'70"	150'70"	36	150'70"	150'70"
37	174'84"	174'84"	174'84"	38	150'70"	150'70"	39	150'70"	150'70"
40	174'84"	174'84"	174'84"	41	150'70"	150'70"	42	150'70"	150'70"
43	174'84"	174'84"	174'84"	44	150'70"	150'70"	45	150'70"	150'70"
46	174'84"	174'84"	174'84"	47	150'70"	150'70"	48	150'70"	150'70"
49	174'84"	174'84"	174'84"	50	150'70"	150'70"	51	150'70"	150'70"
52	174'84"	174'84"	174'84"	53	150'70"	150'70"	54	150'70"	150'70"
55	174'84"	174'84"	174'84"	56	150'70"	150'70"	57	150'70"	150'70"
58	174'84"	174'84"	174'84"	59	150'70"	150'70"	60	150'70"	150'70"
61	174'84"	174'84"	174'84"	62	150'70"	150'70"	63	150'70"	150'70"
64	174'84"	174'84"	174'84"	65	150'70"	150'70"	66	150'70"	150'70"
67	174'84"	174'84"	174'84"	68	150'70"	150'70"	69	150'70"	150'70"
70	174'84"	174'84"	174'84"	71	150'70"	150'70"	72	150'70"	150'70"
73	174'84"	174'84"	174'84"	74	150'70"	150'70"	75	150'70"	150'70"
76	174'84"	174'84"	174'84"	77	150'70"	150'70"	78	150'70"	150'70"
79	174'84"	174'84"	174'84"	80	150'70"	150'70"	81	150'70"	150'70"
82	174'84"	174'84"	174'84"	83	150'70"	150'70"	84	150'70"	150'70"
85	174'84"	174'84"	174'84"	86	150'70"	150'70"	87	150'70"	150'70"
88	174'84"	174'84"	174'84"	89	150'70"	150'70"	90	150'70"	150'70"
91	174'84"	174'84"	174'84"	92	150'70"	150'70"	93	150'70"	150'70"
94	174'84"	174'84"	174'84"	95	150'70"	150'70"	96	150'70"	150'70"
97	174'84"	174'84"	174'84"	98	150'70"	150'70"	99	150'70"	150'70"
100	174'84"	174'84"	174'84"	101	150'70"	150'70"	102	150'70"	150'70"
103	174'84"	174'84"	174'84"	104	150'70"	150'70"	105	150'70"	150'70"
106	174'84"	174'84"	174'84"	107	150'70"	150'70"	108	150'70"	150'70"
109	174'84"	174'84"	174'84"	110	150'70"	150'70"	111	150'70"	150'70"
112	174'84"	174'84"	174'84"	113	150'70"	150'70"	114	150'70"	150'70"
115	174'84"	174'84"	174'84"	116	150'70"	150'70"	117	150'70"	150'70"
118	174'84"	174'84"	174'84"	119	150'70"	150'70"	120	150'70"	150'70"
121	174'84"	174'84"	174'84"	122	150'70"	150'70"	123	150'70"	150'70"
124	174'84"	174'84"	174'84"	125	150'70"	150'70"	126	150'70"	150'70"
127	174'84"	174'84"	174'84"	128	150'70"	150'70"	129	150'70"	150'70"
130	174'84"	174'84"	174'84"	131	150'70"	150'70"	132	150'70"	150'70"
133	174'84"	174'84"	174'84"	134	150'70"	150'70"	135	150'70"	150'70"
136	174'84"	174'84"	174'84"	137	150'70"	150'70"	138	150'70"	150'70"
139	174'84"	174'84"	174'84"	140	150'70"	150'70"	141	150'70"	150'70"
142	174'84"	174'84"	174'84"	143	150'70"	150'70"	144	150'70"	150'70"
145	174'84"	174'84"	174'84"	146	150'70"	150'70"	147	150'70"	150'70"
148	174'84"	174'84"	174'84"	149	150'70"	150'70"	150	150'70"	150'70"
151	174'84"	174'84"	174'84"	152	150'70"	150'70"	153	150'70"	150'70"
154	174'84"	174'84"	174'84"	155	150'70"	150'70"	156	150'70"	150'70"
157	174'84"	174'84"	174'84"	158	150'70"	150'70"	159	150'70"	150'70"

APPROVALS

SIGNED AND APPROVED:

Adrian J. Gray DATE: July 18, 1972
THURSTON COUNTY ENGINEER

George F. Yantchoff DATE: July 18, 1972
CHAIRMAN, BOARD OF THURSTON COUNTY COMMISSIONERS

Clairie C. Labowald DATE: July 18, 1972
THURSTON COUNTY PLANNING DIRECTOR

J.V. Boshayo M.D. DPH DATE: July 18, 1972
THURSTON COUNTY HEALTH OFFICER

By Charles & Leaf R.S.

By Ed Sauter DATE: 7-14-72
THURSTON COUNTY ASSESSOR

Erwin M. Woods, Vice Deputy Treasurer
THURSTON COUNTY TREASURER

I HEREBY CERTIFY THAT ALL TAXES ON THE PROPERTY SHOWN HEREON HAVE BEEN PAID, SIGNED AND APPROVED THIS 14th DAY OF July, A.D. 1972.

FILED FOR RECORD AT THE OFFICE OF THE CLERK OF THE SUPERIOR COURT OF THE STATE OF WASHINGTON, COUNTY OF KING, THIS 18th DAY OF July, 1972, AT 10:45 A.M. BY *Betty Maher* DEPUTY CLERK

C. Wesley Leach THURSTON COUNTY AUDITOR

SCALE: 1" = 100'
INDICATES IRON PIPE SET
STREET MONUMENT SET
5' WIDE UTILITY EASEMENT SHOWN THIS

VOL. 17 PG. 97
AF # 870538