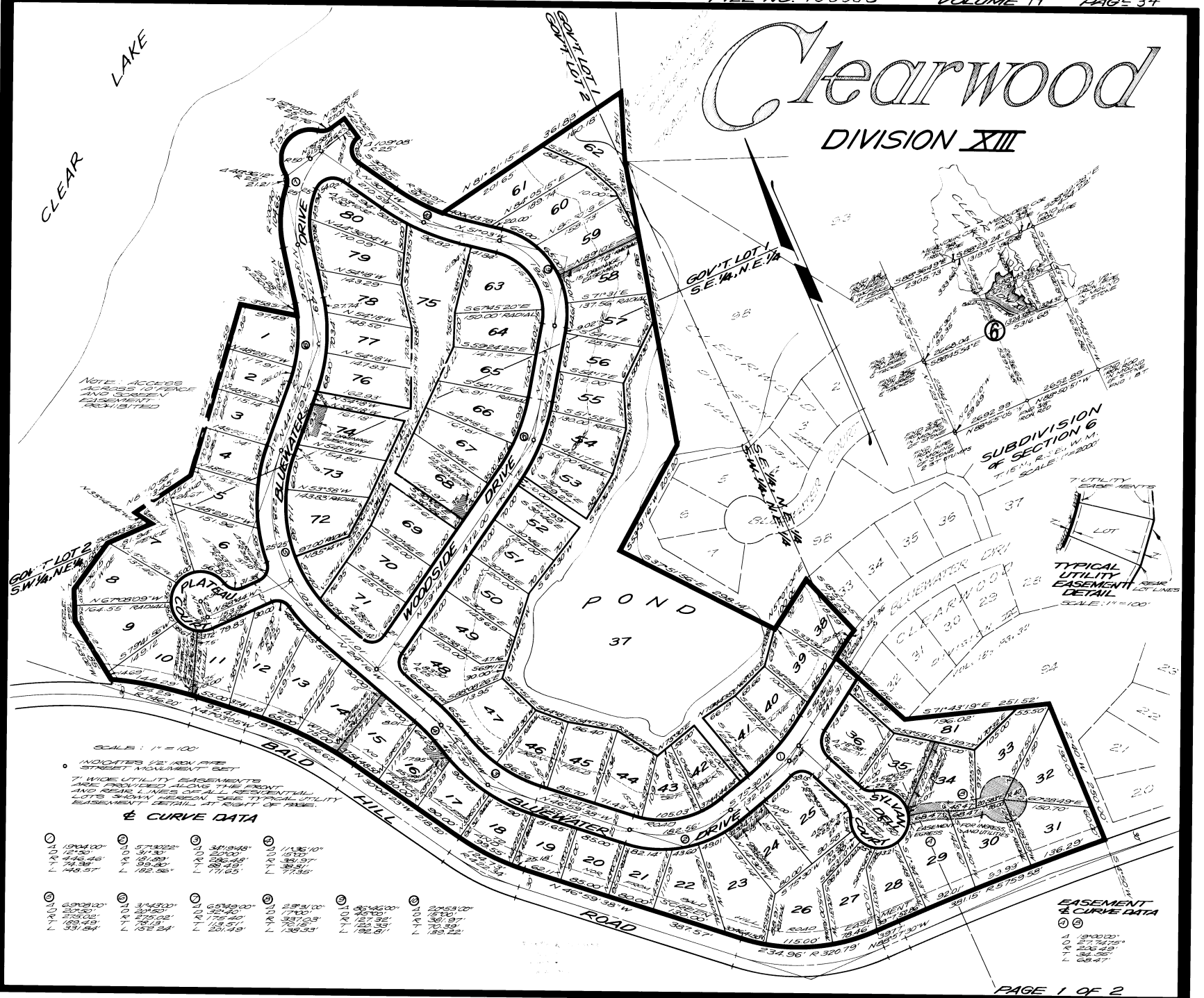


Clearwood

DIVISION XIII



VOL. 19 P. 6.34
AF # 953353

NOTE: ACCESS
ACROSS TO FENCE
AND 32' EASEMENT
EASEMENT
REQUISITED

SCALE: 1" = 100'

INDICATES 12" IRON PIPE
STREET MARKERS IN SET

7' WIDE UTILITY EASEMENTS
ARE PROVIDED ALONG THE FRONT
AND REAR LINES OF ALL RESIDENTIAL
LOTS SHOWN HEREON. SEE TYPICAL UTILITY
EASEMENT DETAIL AT RIGHT OF PAGES.

± CURVE DATA

① 1800.00' 12.00' 146.45' 74.38' 143.57'	② 1800.00' 57.9222° 31.73' 106.90' 99.94° 182.93°	③ 1800.00' 31.0149° 20.00' 96.42° 98.41° 171.65°	④ 1800.00' 11.3510° 10.70' 107.32° 98.81° 173.35°	⑤ 1800.00' 35.4300° 20.25° 174.00° 172.52° 168.24°	⑥ 1800.00' 65.0910° 35.44° 176.50° 168.24° 168.24°	⑦ 1800.00' 25.5100° 17.40° 98.70.9° 136.33°	⑧ 1800.00' 35.4300° 20.25° 174.00° 172.52° 168.24°	⑨ 1800.00' 35.4300° 20.25° 174.00° 172.52° 168.24°	⑩ 1800.00' 35.4300° 20.25° 174.00° 172.52° 168.24°	⑪ 1800.00' 35.4300° 20.25° 174.00° 172.52° 168.24°	⑫ 1800.00' 35.4300° 20.25° 174.00° 172.52° 168.24°
--	--	---	--	---	---	---	---	---	---	---	---

EASEMENT ± CURVE DATA

① 1800.00'
② 57.9222°
③ 31.73'
④ 106.90'
⑤ 99.94°
⑥ 182.93°

